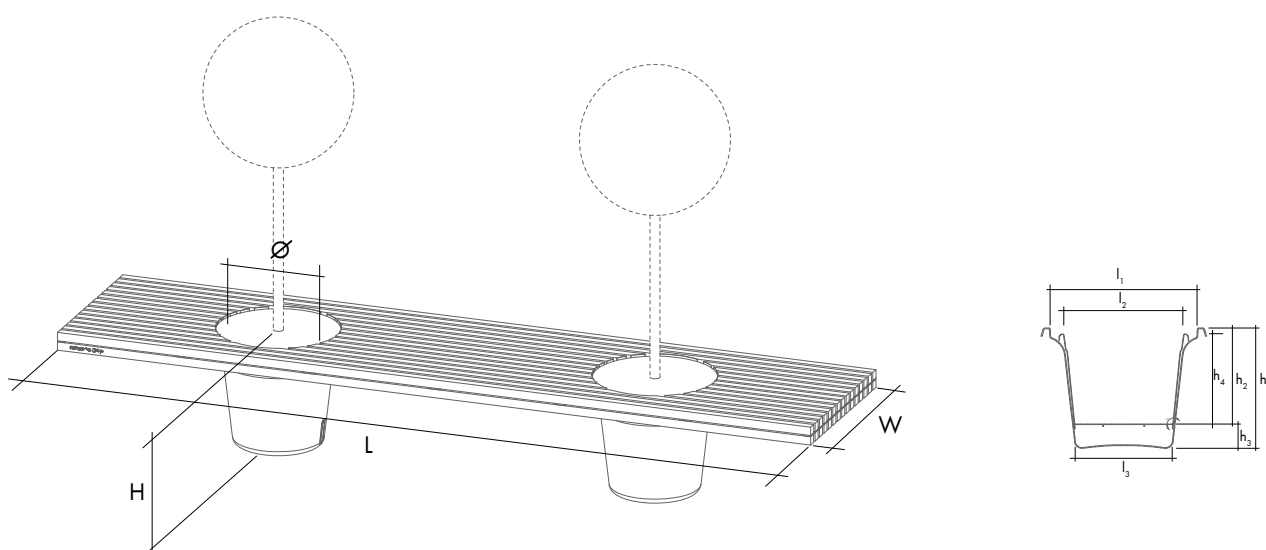


n° 17 romeo & juliet

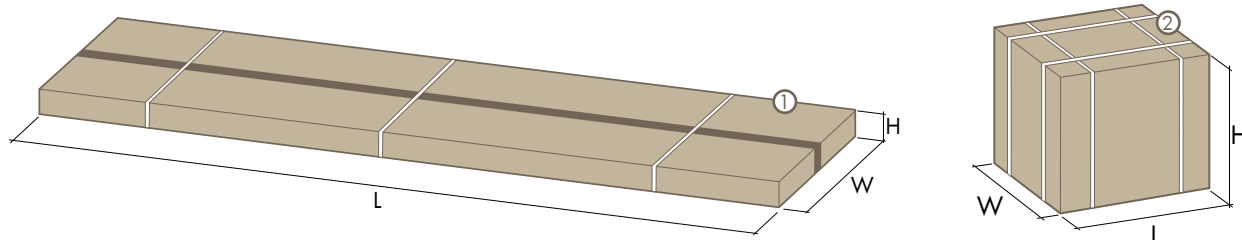
technical sheet

The content of this document, in particular the mentioned models, is protected by copyrights and/or design rights. The present document and its content is communicated to you for information purposes only. Any partial or total reproduction or any other use without our prior written permission is strictly prohibited. This technical sheet remains subject to possible changes. All dimensions are in mm, unless mentioned otherwise. Extremis is not responsible for the errors in the documentation of products. All measurements are approximate and are provided for informational purposes only.

Version 20111212

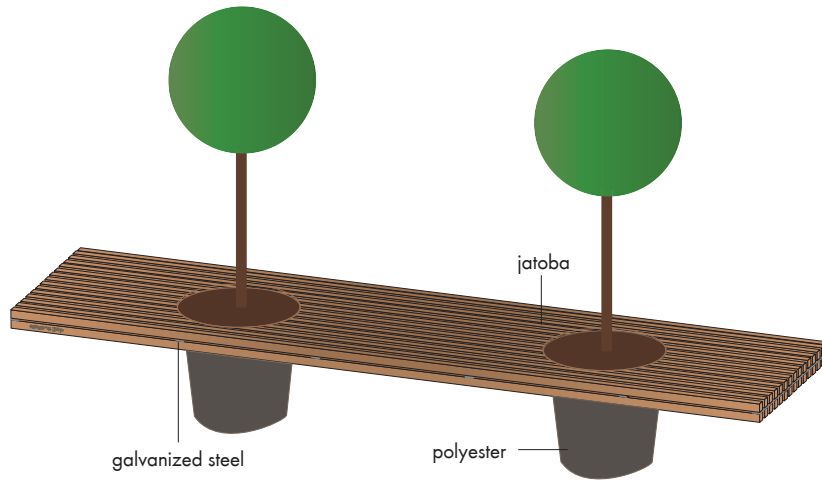





product dimensions (mm)	Ø	L	W	H	l ₁	l ₂	l ₃	h ₁	h ₂	h ₃	h ₄
bench	490	3200	735	485	-	-	-	-	-	-	-
inner pot	-	-	-	-	-	440	360	-	385	-	372
outer pot	-	-	-	-	544	-	360	445	-	60	-



box dimensions (mm)	L	W	H	qty (#)	volume (m ³)	gross weight (kg)	net weight (kg)	packaging weight (kg)
box 1: bench	3030	750	130	1	0,295	121,0	116,5	4,5
box 2: pots	620	620	550	1	0,211	11,2	9,4	1,8
				<i>total</i>	<i>0,506</i>	<i>132,2</i>	<i>125,9</i>	

MATERIALS



materials	key facts	thickness mm	layer thickness micron	density 10 ³ kg/m ³	in/out- door	water	UV colour fastness	flame retarding
Galvanized steel 	<ul style="list-style-type: none"> - most durable method for protecting metal from rusting - protective layer - very long life span - can perfectly be recycled 	2 - 10	50 - 100	7,5	outdoor & indoor	n.a.	very good: galvanisation will however become dull when used outdoors	NEN-EN13501-1 A1*
Jatoba 	<ul style="list-style-type: none"> - exceptional quality - characteristics: durability & stability - bleeds when wood is exposed to rain for the first few times - the dye is water-soluble 	35	n.a.	0,75 - 1,05	outdoor & indoor	n.a.	untreated / wood turns grey after a while	
Polyester 	<ul style="list-style-type: none"> - gel coating is sprayed into the mould - the coating protects the polyester underneath against UV radiation 	2.5 - 3	30 - 60	1,7	outdoor & indoor	n.a.	very good: colour can fade a little bit when exposed to UV	NEN-EN13501-1 C**

* NEN-EN13501-1 A1: Class A1 products will not contribute in any stage of the fire including the fully developed fire. For that reason they are assumed to be capable of satisfying automatically all requirements of all lower classes.

** NEN-EN13501-1 C: As class D but satisfying more stringent requirements.



APPLICATIONS

Private environment

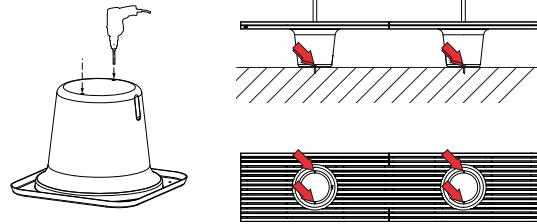
Public spaces: perfect for placing several benches one against the other.

endless modularity



ANCHORING

If the bench is to be anchored to the ground, drill two holes in each polyester container where indicated.

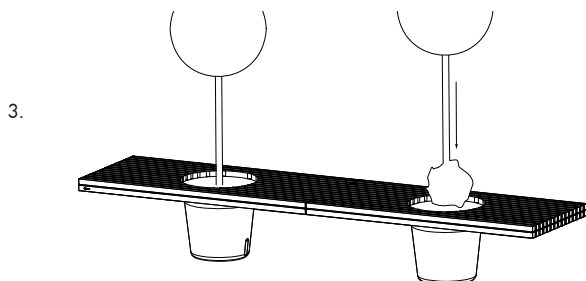
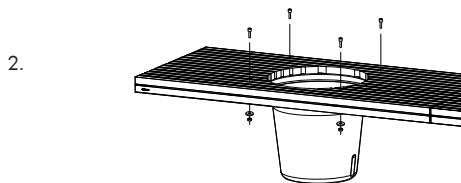
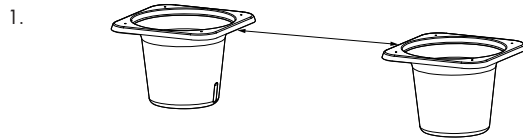


ASSEMBLY

1. Position the 2 polyester containers at the desired spot.
Distance 100 cm.

3. Plant the shrubs in the polyester containers.

2. Put the wooden bench on top of the 2 containers.



QUESTIONS

1. Planting in an inner container, creating a water reservoir: Drill an overflow hole in the side of the polyester container 1 cm above the ground to allow excess water to drain away.



2. It's possible to attach several Romeo & Juliet benches to each other using a coupler.



3. The Jatoba wood used in Romeo & Juliet is FSC[®] certified, which ensures that the wood we buy is sourced from legal, well managed forests.



FAQ

Q: Which plant fits the best in the pots?

A: We advise to choose a small tree or plant which climbs high and doesn't grow too wide. Preferably choose a plant which fits in the climate in which the bench will be used. Ask your florist for advice.

MAINTENANCE

Check: www.extremis.be/tools/romeo-juliet



