

Compas Direction

Jean Prouvé, 1953

vitra.



Compas Direction

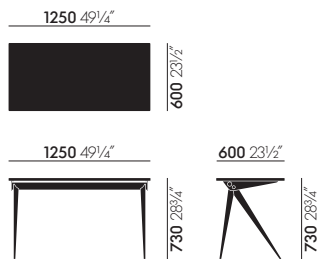
Jean Prouvé developed the Compas table in various models around 1950, applying the construction principles that he is known for. All share elegantly splayed, narrow legs in metal, a formal reminder of a compass – in French, “le compas”.

The oiled solid wood table tops give Compas Direction an individual touch. With its compact dimensions, the table is ideal for the contemporary, largely paperless, home office, where it cuts a fine figure.

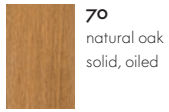
Materials

- **Table top:** Solid wood, oiled; natural oak, smoke oak or american walnut.
- **Base:** Moulded sheet steel, powder-coated.

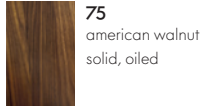
DIMENSIONS (measurements are established pursuant to EN 1335-1)



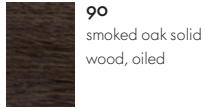
Compas Direction



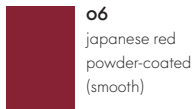
70
natural oak
solid, oiled



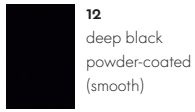
75
american walnut
solid, oiled



90
smoked oak solid
wood, oiled



06
japanese red
powder-coated
(smooth)



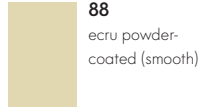
12
deep black
powder-coated
(smooth)



40
chocolate
powder-coated
(smooth)



80
coffee powder-
coated (smooth)



88
ecru powder-
coated (smooth)

Table Top

Base

