

Guéridon

Jean Prouvé, 1949/1950

vitra.



Guéridon

The Guéridon wooden table, which was produced by the designer and engineer Jean Prouvé for the University of Paris, is a convincing demonstration of clear structural principles. It is a variation of Prouvé's architecturally informed design vocabulary in a natural material, proving that modern tables do not have to be made out of steel and glass.

Materials

- **Table top:** Solid wood, oiled; natural oak, smoked oak or American walnut.
- **Base:** to match the tabletop made of solid wood, oiled in natural oak, smoked oak or American walnut. Tubular steel strut, powder-coated.

DIMENSIONS

Ø1050 Ø41¼"



Ø1050 Ø41¼"



Guéridon, Ø 1050 mm x Höhe 740 mm

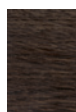
Surfaces and colors



70
natural oak
solid, oiled



75
american walnut
solid, oiled



90
smoked oak
solid wood,
oiled



12
deep black
powder-coated
(smooth)

Table

Linking element

