

Standard

Jean Prouvé, 1934/1950

vitra.



Standard

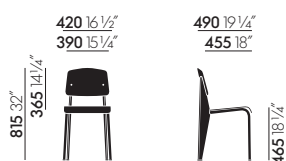
Chairs take the most stress on their back legs, where they bear the load of their user's upper body. The engineer, architect and designer Jean Prouvé illustrates this simple insight in his design for the Standard Chair: while tubular steel suffices for the front legs that bear

relatively little weight, the back legs are made of voluminous hollow sections and transfer the stress to the floor.

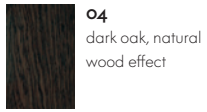
Materials

- **Seat and backrest:** oak (natural or dark finish), walnut (black pigmented finish).
- **Frame:** pressed sheet steel and tubular steel, powder-coated.

DIMENSIONS (measurements are established pursuant to EN 1335-1)



Standard Chair



04
dark oak, natural
wood effect



10
natural oak,
natural wood
effect



45
black
pigmented
walnut



06
japanese red
powder-coated
(smooth)



12
deep black
powder-coated
(smooth)



40
chocolate
powder-coated
(smooth)



80
coffee powder-
coated
(smooth)



88
ecru powder-
coated
(smooth)

Seat and back

Base

