

Planet, suspension design Changedesign 2011

FOSCARINI



Planet is the result of Foscarini's ongoing exploration of the universe of materials and its desire to overcome the challenge of creating a fabric lamp without a frame inside.

The idea, which sprang from a study of "smart clothing" for astronauts, commissioned by NASA and conducted by Dainese in conjunction with the MIT, was to use a fabric borrowed from the sailing world. Due to its texture and sewing process, this fabric would provide the frame of the lamp.

Planet is actually the joining of three pieces of this high-tech fabric, handsewn, onto which an external embroidery is applied, acting both as decoration as well as a support. Depending on the color of the embroidery, the personality of the lamp changes. In the red version, the special thread supporting the lamp creates a pattern that stands out on the white fabric. In the white version, the embroidery creates a precious yet discreet ton-sur-ton effect, a slight weft when the lamp is turned off,

that turns into a back-lit decoration when the lamp is turned on. Innovative and familiar, pleasantly organic rather than cold and geometric, Planet distinguishes its setting with irresistible appeal, unprecedented presence and warm, cozy and welcoming luminosity. Available in two different sizes, it is ideal for use in several rooms throughout the home or in contract settings.

Planet, suspension technical info

FOSCARINI

Description

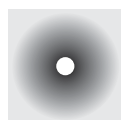
Suspension lamp with diffused light. Diffuser made of Polyethylene terephthalate, a material that is normally used to make clothing or sails, nylon embroidery cord. The manufacturing process envisages the stitching of various pieces of fabric, designed and cut for this purpose, to form a spherical volume. Epoxy powder coated metal mount, stainless steel suspension cable and transparent electrical cable. Ceiling rose with galvanised metal bracket and glossy white batch-dyed ABS cover, multiwatt electronic transformer for the fluorescent version. Canopy decentralisation kit available.

Materials: polyethylene terephthalate, metal

Colours: white/white, white/red

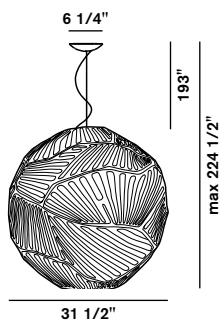


Brightness
diffused light



Model

Planet large



Weight

net lbs 5,73
gross lbs 9,26

Packing

vol. cub. ft. 7,769
n.boxes: 2

Bulbs

– halogen 1x150W E26 medium
type T10 shielded frosted



– fluorescent 1x42W GX24q-4 type T4
electronic ballast multiwatt 26/32/42

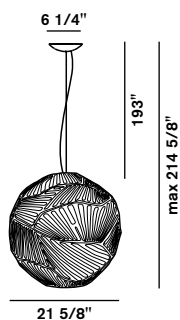


120-277V

Certifications



Planet small



Weight

net lbs 5,07
gross lbs 7,72

Packing

vol. cub. ft. 3,672
n.boxes: 2

Bulbs

– halogen 1x100W E26 medium
type T10 shielded frosted



– fluorescent 1x32W GX24q-3 type T4
electronic ballast multiwatt 26/32



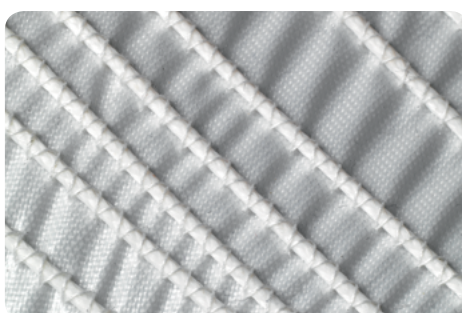
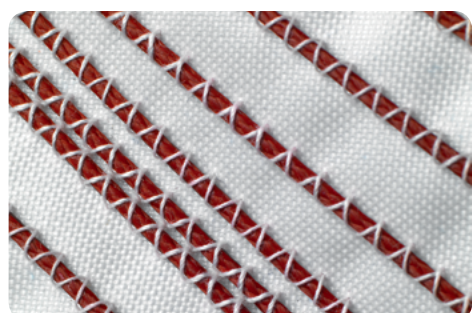
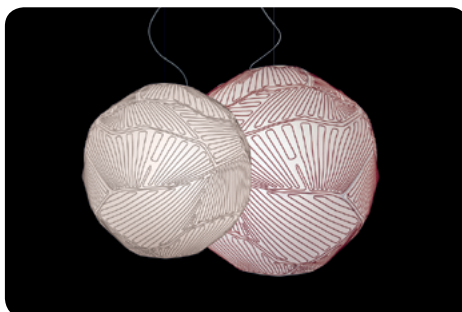
120-277V

Certifications



[2D/3D drawings](#)
[photometric info](#)
[assembly instructions](#)

area download



Planet, suspension designer

FOSCARINI

Changedesign

Changedesign is a multidisciplinary studio made up of a group of designers from different countries working in industrial, interior, trade, retail and fashion design. Founded and directed by Renato Montagner, it has two offices: Venice and Milan. It has worked in partnership with Dainese, Invicta, 55DSL, Fiat and Louis Vuitton.



Watch the Planet video:



Go to concept site for Planet:
www.foscarini.com/planet