

bruunmunch  / *Remedy / specs*





Description

The Remedy sofa is designed to establish a space in which one can relax and re-energize. The sofa contains a low circumscribing backrest, with a profile that grabs the seat plane and provides a supportive, comfortable bolster. Back and armrest are a unity, which embraces the human body. The Remedy sofa presents the appearance of a muscular upper body, and it is borne on elegant oak legs. The outer upholstery is removable and suitable for cleaning...

Construction

The frame of Remedy is constructed from European plywood - a tough, light and durable material. The outside and inside of the frame sections are covered in masonite and the seat frame is built from solid pine mounted with strong elastic bands.

Versus only use EcoTex labeled and high density fire retardant cold cured foam in different qualities. This ensures a high level of comfort and durability and keep in shape for several years.

Seat cushion core from 40 kilograms quality. Inside back and inside arms are constructed with 35 kilograms cold cured foam. The full sofa is covered with thick shrouds from durable and strong 27 kilograms cold cured foam. The fabric cover on Remedy is removable and can be dry cleaned.

A special non stick fiber wadding are sewn into the cover to ensure a soft look and to create the deep outside sewings.

Remedy is only available with top quality upholstery from high end brands; Kvadrat, Gabriel and Camira and are also available with leather upholstery from Sørensen leather.

Solid oak runners with oil finish.

Designer

Antonio Scaffidi is a furniture and product designer, based in Copenhagen. His studies and graduation from the highly recognised Danish Design School were suitably built upon his background as a trained carpenter. Today, Scaffidi Design is a multi-disciplinary design studio, which handles tasks within the furniture and consumer product industry. A general perception of design as an interplay of creative ideas together with a meticulous pursuit of making things better, have gained him the trust of numerous collaborators.





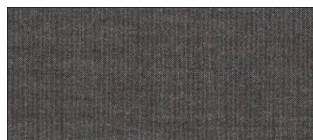
Upholstry options

Remix 2

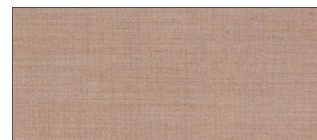
Manufacturer: Kvadrat
Design: Giulio Ridolfo
Composition: 90% new wool,
10% nylon
Martindale: 100.000



143



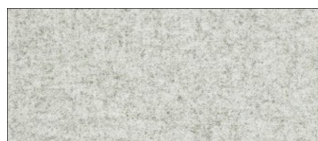
152



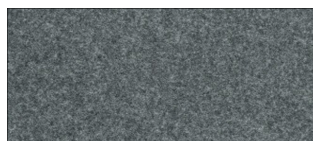
612

Divina Melange 2

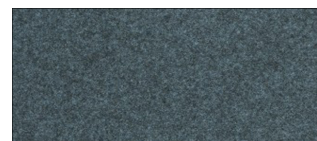
Manufacturer: Kvadrat
Design: Finn Sködt
Composition: 100 % new wool,
Martindale: 45.000



120



170



771

Dimensions



2-seater
Width 182/122 cm
Depth 95/65 cm
Heigh 66/40 cm



2.5-seater
Width. 212/152 cm
Depth 95/65 cm
Heigh 66/40 cm



3-seater
Width 242/182 cm
Depth 95/65 cm
Heigh 66/40 cm